

NATURA MEDIA

# SERIES PROGRAM

# CONTENTS

## Why Natura's Series Program?

1. Provides total solution for customers
2. To meet partners' customized products for various need

### 01 SKY SERIES

### 02 BACKLIT SERIES

### 03 DURATIN SERIES

### 04 FLAT-ON SERIES

### 05 PHOTO PAPER SERIES

# WHY SKY SERIES?

Specifically designed media for UV and Latex technology

And, most special features are ;

- 01/ Bright bluish white surface with outstanding expression
- 02/ Specifically designed base materials
- 03/ Provides price competitiveness solution
- 04/ Scratch & water resistant
- 05/ 100% PVC Free

## **SKY SERIES** at Glance

Classification	Code	Product Name
Adhesive Category	SK100	SKY Green Adhesive
Flat-on Category	SK400	SKY Flat-on Air-Free
	SK500	SKY Flat-on White
Roll up Category	SK200	SKY Smooth Roll up
	SK600	SKY High Roll up
	SK300	SKY Block out 210
Pop up Category	SK700	SKY High Pop up 320
Backlit Category	TUE330	SKY High Backlit



### SK100 SKY Green Adhesive

#### FEATURES

- Bright bluish white surface
- Scratch & water resistant
- 100% PVC Free
- Permanent self-adhesive
- Excellent curl balance with premium liner



### SK400 Flat-on Air Free

#### FEATURES

- Bright bluish white surface
- Scratch & water resistant
- 3R : Removable, Repositionable, Reuseable
- Easy to install
- No residue



### SK500 SKY Flat - on White

#### FEATURES

- Bright bluish white surface
- Scratch & water resistant
- Outstanding color expression
- Anti-scratch back coated
- Curl free & block out



### TEU330 SKY High Backlit

#### FEATURES

- Bright bluish white surface
- Scratch & water resistant
- Specially designed PET film based
- Wide color gamut, and vivid color with light
- Excellent fixation to the ink and media







## SK200 SKY Smooth Roll Up

### FEATURES

- Bright bluish white surface
- Scratch & water resistant
- Outstanding color expression
- Commodity roll up banner
- Curl free & block out



## SK300 SKY Block Out 210

### FEATURES

- Bright bluish white surface
- Scratch & water resistant
- Outstanding color expression
- Double side printable by UV & LATEX
- Curl free & block out



## SK600 SKY High Roll Up

### FEATURES

- Bright bluish white surface
- Scratch & water resistant
- Outstanding color expression
- Anti-scratch back coated
- Curl free & block out



## SK700 SKY High Pop Up 320

### FEATURES

- Bright bluish white surface
- Scratch & water resistant
- Outstanding color expression
- Anti-scratch back coated
- Curl free & block out
- For POP-UP banner application



# WHY NATURA'S BACKLIT?

Total Solution for Customer's needs with outstanding product quality and wide range

And, most special features are ;

- 01 Even diffusion of light
- 02 Vivid color expression with / without light
- 03 Superior base polyester film
- 04 Various options to meet customers' needs
- 05 Anti-slip for better feeding & Anti-static treated for better printing

## **BACKLIT Package** at Glance

Classification	Water based (UV/Latex)	Solvent based (UV/Latex)	UV / LATEX
STANDARD BACKLIT	BF600	SO600	TEU300
		SO650	
FUNCTIONAL BACKLIT	BF700	MES680	TEU330
		ES680	WF300
		SO800W	ES690





## BF600 Backlit Front Matte WR 215

### FEATURES

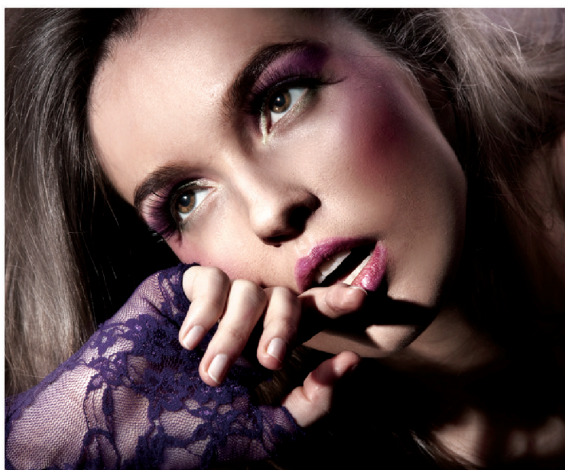
- Wide color gamut and vivid color with light
- Outstanding color expression
- Highest ink limit
- Strong and rigid base material
- Bright and bluish surface & block out



## BF700 M/P Backlit Front Glossy 215

### FEATURES

- Glossy microporous coating (Instant dry)
- Wide colours combined with very deep blacks
- Sharp expression
- Anti-slip



## S0600 Solvent Backlit 200 Matte

### FEATURES

- Matte coating reduces glare
- Even diffusion of light
- High contrast & High image density
- Anti - slip



## S0650 Solvent Backlit 200 Glossy

### FEATURES

- Glossy coating surface
- Even diffusion of light
- High contrast & High image density
- Anti - slip





## ES680 Eco-sol Backlit Glossy

### FEATURES

- High ink limit and faster drying time than standard backlit
- High gloss surface
- Outstanding expression
- Even diffusion of light



## MES680 T-U Backlit Glossy

### FEATURES

- High ink limit and faster drying time than standard backlit
- Printing & take-up available (For big printing company)
- Non-slip & Anti-blocking
- Outstanding expression
- Even diffusion of light



## S0800W Eco-Sol Clear Backlit 200 Glossy

### FEATURES

- Transparent polyester coated backlit
- Lower ink amount used with white acrylic PC panel
- Faster drying & Faster production
- Outstanding expression
- Even diffusion of light







## TEU300 UV Backlit 180

### FEATURES

- Double side coated PET for both sides printing
- Economical solution for UV & Latex
- Anti-slip & Anti-scratch & Waterproof
- Outstanding expression (Natural color)
- Even diffusion of light



## TEU330 SKY High Backlit

### FEATURES

- Optimized coating layer for UV & Latex
- Double side coated PET for both sides printing
- Economical solution for UV & Latex
- Anti-slip & Anti-scratch & Waterproof
- Outstanding expression (Bright bluish white)
- Even diffusion of light



## ES690 Green Backlit

### FEATURES

- Optimized for Latex 3rd Generation
- Non - PVC components top coating
- Bright bluish white
- High image density & Outstanding expression
- Even diffusion of light



## WF300

### FEATURES

- Bright color expression by indirect light (No need light panel)
- Reverse installation available
- No need UV white ink
- Removable clear acrylic semi-tac adhesive
- Even diffusion of light





# WHY DURATIN SERIES?

“Not price sales, but Value sales”

## Market situation of Roll up

- Chinese products : Price is decreased
- European products : Coming from ASIA with lower sales price
- Korean manufacturers: Copying Natura products
- Getting serious price competition



## Value upgrade

- No more price competition : different value delivery
- No more lower price product : High value with little higher price
- Need to develop “high value products with similar cost level”

## DURATIN

- 1 90% Customers have no over-laminating process due to cost issue  
- But “Customers wants over-laminating quality for differentiation”
- 2 COPY-Protection products : 100% our own coating formulation
- 3 Similar price level : no higher price comparing with existing products

## **DURATIN SERIES** at Glance

Classification	Code	Product Name
Pop up Category	DES410T	DURATIN BLOCK OUT BANNER 350
Roll up Category	ES400	DURATIN ROLL UP BANNER
	ES420	DURATIN BLOCK OUT BANNER 250
	ES500	DURATIN SYNTH ROLL UP BANNER



## ES400 DURATIN ROLL UP BANNER

### FEATURES

- **Textured Satin Anti Scratch Top Coating** (no lamination needed)
- Environment friendly (100% PVC-free)
- Faster drying with special sturcture
- Reasonable price range with best level of quality
- Premium white PET based (good opaque)
- Curl free & block out



## ES420 DURATIN BLOCK OUT BANNER 250

### FEATURES

- **Textured Satin Anti Scratch Top Coating** (no lamination needed)
- Environment friendly (100% PVC-free)
- Faster drying with special sturcture
- Reasonable price range with best level of quality
- Curl free & block out
- Double side printable with UV & LATEX



## ES500 DURATIN SYNTH ROLL UP BANNER

### FEATURES

- **Textured Satin Anti Scratch Top Coating** (no lamination needed)
- Environment friendly (100% PVC-free)
- Faster drying with special sturcture
- Reasonable price range with best level of quality
- Curl free & block out
- Commodity roll up banner



## DES410T DURATIN BLOCK OUT BANNER 350

### FEATURES

- **Textured Satin Anti Scratch Top Coating** (no lamination needed)
- Environment friendly (100% PVC-free)
- Faster drying with special sturcture
- Curl free & block out
- Save the installation cost and labor



# WHY FLAT-ON SERIES?

Flat-on® program is designed for all kinds of flat surface without any adhesive glue.

And, most special features are ;

- 01 Good stickiness without any glue and bonding
- 02 Easy apply and easy remove
- 03 3R : Re-moveable, Re-positionable and Re-useable without damage of image
- 04 No residue problem after long-term use
- 05 100% environmentally friendly
- 06 100% PVC free material

And, we prepared various options for your application

- 01 Ready for Solvent / Water based / Latex / Inkjet UV / UV offset printing technology
- 02 Ready for Clear / White application
- 03 Ready for long term use / short term use base material
- 04 Ready for wet (water) / bubble free (air channel) / air melting (no squeezing)

Flat-on® program is fully covering all printing technology and flat application.

## **FLAT-ON SERIES** at Glance

Classification	Water based (Latex)	Solvent based (Latex)	UV based (Off set)
Clear PET based		SO820ST	USO820ST
Surface finish		Optical clear	Optical clear
White PET based	SE340ST	SO820WST	USO820WST
Surface finish	Semi-matte	Semi-matte	Semi-matte
Premium PP based with air free		WF200	
Surface finish		Semi-matte	

\* Special Product : **WF300** (Backlit effect by indirect light for window application)





### SE340ST White PET Flat® - on Waterbased

#### FEATURES

- Premium white PET film based
- 3R : Removable, Repositionable, Reuseable
- Easy to install
- No residues



### S0820WST White PET Flat® - on Solvent

#### FEATURES

- Premium white PET film based
- 3R : Removable, Repositionable, Reuseable
- Easy to install
- No residues



**Natura**  
MAKE A DIFFERENCE

### S0820ST Optical clear Flat® - on Solvent

#### FEATURES

- Premium optically clear PET film based
- Reverse printable
- 3R : Removable, Repositionable, Reuseable
- Easy to install
- No residues



### WF200 Wipeable PP Flat® - on Solvent

#### FEATURES

- Air-free liner with micro tac adh
- Removable & Repositionable adh
- Easy to install with bubble free
- No residue





### US0820ST Optical clear Flat® on UV

#### FEATURES

- Premium optically clear PET film based
- Economical version
- Reverse printable
- 3R : Removable, Repositionable, Reuseable
- Easy to install
- No residues



### US0820WST White PET Flat® on UV

#### FEATURES

- Premium white PET film based
- Economical version
- 3R : Removable, Repositionable, Reuseable
- Easy to install
- No residues



### WF300 Window Mirror Light Film

#### FEATURES

- Bright color expression by indirect light (No need light panel)
- Reverse installation available
- No need UV white ink
- Removable clear acrylic semi-tac adhesive





# WHY NATURA'S PHOTO PAPER?

Superlative RC paper with innovative coating for  
Aqueous & Solvent Technology

And, most special features are ;

- 01 Resin coated base paper
- 02 Various range of product - Glossy, Satin, Matte
- 03 Photo realistic color reproduction
- 04 Outstanding whiteness / Rich Black
- 05 Photo album, prints / Graphic art / Indoor / Outdoor poster signage

## **PHOTO PAPER Package** at Glance

Classification	Water based		Solvent based		
	Glossy	Satin	Glossy	Satin	Matte
STANDARD	PH300 (265g/m <sup>2</sup> )	PH400 (265g/m <sup>2</sup> )	SO110 (230g/m <sup>2</sup> )	SO220 (230g/m <sup>2</sup> )	
	PH500 (240g/m <sup>2</sup> )	PH600 (240g/m <sup>2</sup> )	AE100 (230g/m <sup>2</sup> )		AE110 (230g/m <sup>2</sup> )
	PH700 (190g/m <sup>2</sup> )	PH710 (190g/m <sup>2</sup> )			
	PH730 (280g/m <sup>2</sup> )	PH740 (280g/m <sup>2</sup> )			
ADHESIVE					



### PH300 M/P PREMIUM GLOSSY PHOTO PAPER 265

#### FEATURES

- Microporous coating (Instant Dry)
- Rich black / White surface / Glossy finish
- High quality resin coated paper
- Outstanding image expression
- Heavy weight (265 g/m<sup>2</sup>)



### PH400 M/P PREMIUM SATIN PHOTO PAPER 265

#### FEATURES

- Microporous coating (Instant Dry)
- Rich black / White surface / Satin finish
- High quality resin coated paper
- Outstanding image expression
- Heavy weight (265 g/m<sup>2</sup>)



### PH500 M/P PREMIUM GLOSSY PHOTO PAPER 240

#### FEATURES

- Microporous coating (Instant Dry)
- Rich black / White surface / Glossy finish
- High quality resin coated paper
- Outstanding image expression
- Medium weight (240 g/m<sup>2</sup>)



### PH600 M/P PREMIUM SATIN PHOTO PAPER 240

#### FEATURES

- Microporous coating (Instant Dry)
- Rich black / White surface / Satin finish
- High quality resin coated paper
- Outstanding image expression
- Medium weight (240 g/m<sup>2</sup>)







### PH700 M/P PREMIUM GLOSSY PHOTO PAPER 190

#### FEATURES

- Microporous coating (Instant Dry)
- Rich black / White surface / Glossy finish
- High quality resin coated paper
- Outstanding image expression
- Light weight (190g/m<sup>2</sup>)



### PH710 M/P PREMIUM SATIN PHOTO PAPER 190

#### FEATURES

- Microporous coating (Instant Dry)
- Rich black / White surface / Satin finish
- High quality resin coated paper
- Outstanding image expression
- Light weight (190g/m<sup>2</sup>)



### PH730 M/P GLOSSY ADHESIVE PHOTO PAPER 190

#### FEATURES

- Microporous coating (Instant Dry)
- Rich black / White surface / Glossy finish
- High quality resin coated paper
- Outstanding image expression
- Permanent adhesive back



### PH740 M/P SATIN ADHESIVE PHOTO PAPER 190

#### FEATURES

- Microporous coating (Instant Dry)
- Rich black / White surface / Satin finish
- High quality resin coated paper
- Outstanding image expression
- Permanent adhesive back







## S0110 SOLVENT GLOSSY PHOTO PAPER 235

### FEATURES

- Specialized eco-solvent coating
- Capable of high ink loads
- High quality resin coated paper
- Smooth / Glossy finish
- Outstanding image expression



## S0220 SOLVENT SATIN PHOTO PAPER 235

### FEATURES

- Specialized eco-solvent coating
- Capable of high ink loads
- High quality resin coated paper
- Smooth / Satin finish
- Outstanding image expression



## AE100 ECO-SOL ARTIST PAPER GLOSSY 230

### FEATURES

- Economical fine art paper
- Good image expression
- Glossy finish



## AE110 ECO-SOL ARTIST PAPER MATTE 230

### FEATURES

- Economical fine art paper
- Good image expression
- Matte finish



## **NATURA MEDIA Inc.**

12F ShinhanDM Bldg, Mapo Street 25,  
Mapo-gu, Seoul, Korea 04167

Tel. +82-2-3788-0365

Fax. +82-2-3788-0326

E-mail. [sales@naturamedia.co.kr](mailto:sales@naturamedia.co.kr)

## **NATURA MEDIA EUROPE**

RUE DES DROITS DE L'HOMME 2,  
7000 MONS, BELGIUM

Tel. +32-65-701-835

Fax. +32-65-470-393

E-mail. [jhhong@naturamedia.co.kr](mailto:jhhong@naturamedia.co.kr)

## **NATURA MEDIA USA**

1505 Pavilion Place Suite D, Norcross, GA  
30093

Tel. +1-470-359-2111

Fax. +1-470-359-2199

E-mail. [sales@naturamedia.us](mailto:sales@naturamedia.us)

Homepage. [www.naturamedia.us](http://www.naturamedia.us)

Copyright © NATURA MEDIA Inc. All Right Reserved.

@ 08. 2017 MADE IN KOREA